



ASİNSAAT
INDUSTRY & TRADE Co.

TABLE OF CONTENTS

Aksaray/ Ekecek Defence Radar.....	3
Aircraf Shelter.....	4-5
Afyon Airbase Runways Parking Apron	6-7
Avionic Workshop.....	8
Security System of Diyarbakir Airbase	9
Repair of Earthquake Damages in Arifiye Tank Farm Units.....	10
Pipeline Installation Between Malatya- Erhac Airbase.....	11
Sabiha Gökçen Airport Flight Control Tower	12-13
Sabiha Gökçen Airport Terminal Building	14
Sabiha Gökçen Airport Parking Apron.....	15
Erzurum & Batman Airbases Infrastructure.....	16
Expansion of Elazığ Pol Depot Capacity.....	17
Trabzon Airport Parking Apron.....	18
Adana Airport Apron.....	19
Muratlı Hydroelectric Power Plant.....	20-21
Onur Hydroelectric Power Plant.....	22-23
Muratlı Solar Power Plant.....	24
Onur Solar Power Plant.....	25
Arcanus Side Resort Hotel.....	26-27
Arcanus Trendline Resort Side Hotel.....	28-29
Ramada Resort Lara Hotel.....	30-31
Wyndham Garden Lara Hotel.....	32
Port Bosphorus Hotel.....	33
Sütcan Daily Farming Facilities.....	34-35
Millenium Park Residences.....	36
Millenium Park Apartments.....	37
Millenium Park Bazaar.....	38
Migros Main Distribution Center.....	39
Kıgılı Stores Main Distribution Center.....	40



ASINSAAT
INDUSTRY & TRADE Co



ASİNŞAAT
INDUSTRY & TRADE Co.

As İnşaat Tourism, Livestock, Industry, and Trade Incorporated Company was founded in 1996 and continues its operations in the fields of energy, tourism, military, residential, and industrial construction.

AKSARAY/EKECEK DEFENCE RADAR



Completion Date: 1998

Construction duration: 24 months

Construction Type: Semi-Hardened Structure
(800 sqm)





AIRCRAFT SHELTER



Completion Date: 1996

Construction Duration: 24 months

Construction Type: Hardened Structure (648 sqm)

Number of Shelter: 34





AFYON AIRBASE RUNWAY & PARKING APRON



Completion Date: 2000

Construction Duration: 24 months

Construction Area:

- Runway: 51 x 4.400 m

- Taxiway: 36 x 3.600 m

- Parking Apron: 175.000 sqm



AVIONIC WORKSHOP



Completion Date: 2000
Construction duration: 24 months
Construction Type: Hardened Structure
(1.600 sqm)



SECURITY SYSTEM OF DIYARBAKIR AIRBASE

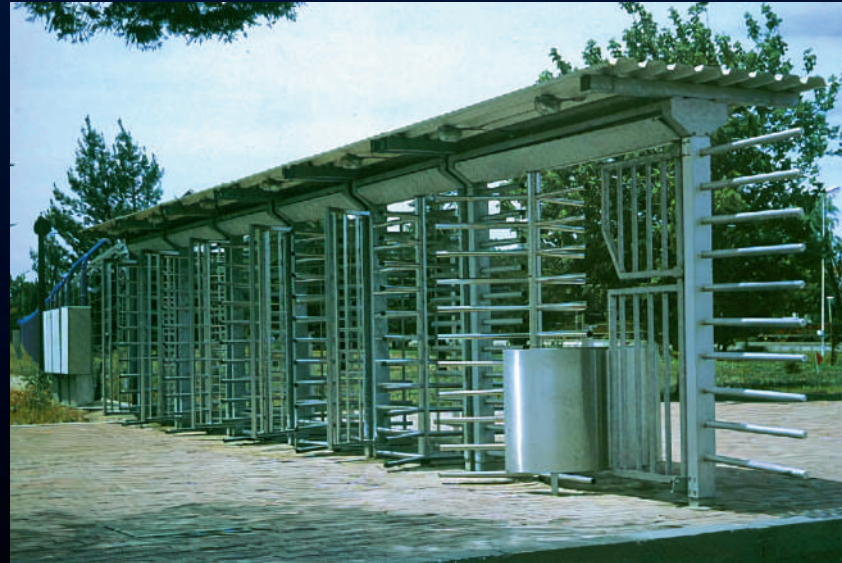


Completion Date: 2000

Construction Duration: 24 months

Construction Information:

- 15.000 meters of Security Fencing
- 7 Reinforced Concrete Observation Towers
- X- Ray Acces Control Gate with Card Reader
- 124 Motion- Activated Remote-Controlled Camera System



REPAIR OF EARTHQUAKE DAMAGES IN ARIFIYE TANK FARM UNITS



Completion Date: 2000

Construction duration: 12 months

Renew of manifold, storage and drainage tanks, pump station and pipelines.



PIPELINE INSTALLATION BETWEEN MALATYA- ERHAÇ AIRBASE



Completion Date: 2000
Construction duration: 12 months
DN 150 Pipeline length: 19.500 m





SABIHA GÖKÇEN AIRPORT FLIGHT CONTROL TOWER



Completion Date: 2001

Construction Duration: 12 months

Construction Area: 6.250 sqm

Tower Height: 37,10 m



SABIHA GÖKÇEN AIRPORT TERMINAL BUILDING



Completion Date: 2001

Construction Duration: 24 months

Construction Area:

Domestic Terminal: 2.600 sqm

International Terminal : 16.500 sqm



SABIHA GÖKÇEN AIRPORT PARKING APRON



Completion Date: 2006

Construction Duration: 12 months

Construction Area: 10.000 sqm



ERZURUM & BATMAN AIRBASES INFRASTRUCTURE



Completion Date: 2002

Construction duration: 24 months

Construction Data:

3 x 1200 sqm Hangar Renovation

3 x 2500 cum Fuel Storage Tank

40.000 sqm Paved Area

1.200 m Pipeline



EXPANSION OF ELAZIĞ POL DEPOT CAPACITY



Completion Date:
2004

Construction Duration:
12 months

Increase Depot Capacity:
10.000 cum



TRABZON AIRPORT PARKING APRON



Completion Date: 2004

Construction Duration: 12 months

Construction Area: 46.000 sqm



ADANA AIRPORT APRON



Completion Date: 2005
Construction Duration: 12 months
Construction Area: 12.000 sqm





MURATLI HYDROELECTRIC POWER PLANT



Completion Date: 2011
Construction Duration: 24 months
Land Area: 120.000 sqm
Construction Data:
Open channel : 8 x 5 x 950 m
Tunnel: 6,85 x 4.100 m
HEPP building : 1250 sqm
Power: 38 MW
Yearly production: 130.000 MW





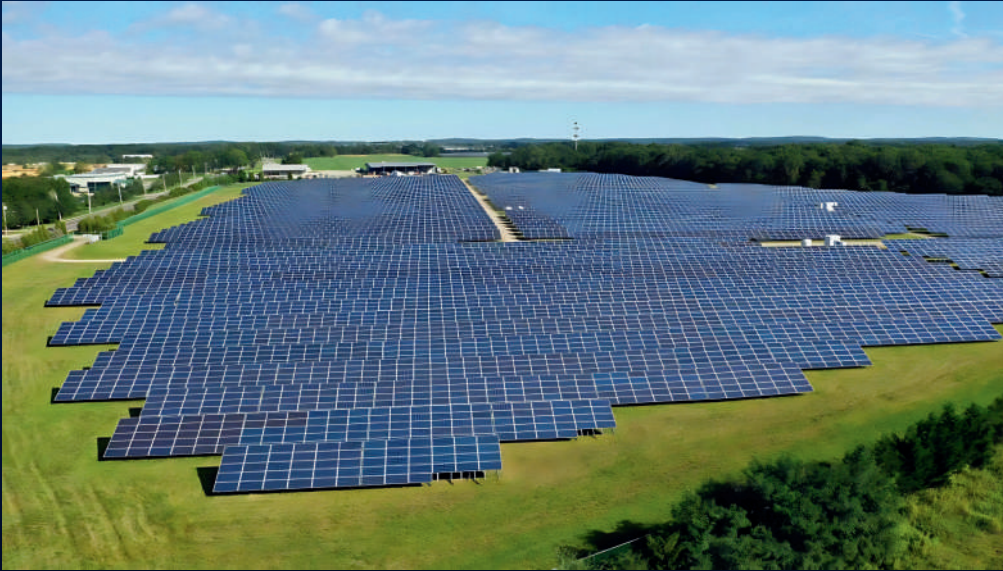
ONUR HYDROELECTRIC POWER PLANT



Completion Date: 2015
Construction Duration: 20 months
Land Area: 195.000 sqm
Construction Data:
Tunnel: 4,00 x 3.330 m
HEPP Building : 360 sqm
Power: 20 MW
Yearly Production: 41.000 MW



MURATLI SOLAR POWER PLANT



Completion Date: 2024
Construction Duration: 6 months
Land Area: 460.000 sqm
Total Panel Area: 175.000 sqm
Power: 38 MW
Yearly Production: 60.000 MW

ONUR SOLAR POWER PLANT



Completion Date: 2024

Construction Duration: 6 months

Land Area: 243.000 sqm

Total Panel Area: 91.000 sqm

Power: 20 MW

Yearly Production: 30.000 MW





ARCANUS SIDE RESORT HOTEL



Category: 5- Star Hotel Development

Completion Date: 2007

Room Quantity: 500





ARCANUS TRENDLINE RESORT SIDE HOTEL



Category: 5- Star Hotel Development

Completion Date: 2023

Room Quantity: 400





RAMADA RESORT LARA HOTEL



Category: 5-Star Hotel Development
Completion Date: 2013
Room Quantity: 396



WYNDHAM GARDEN LARA HOTEL



Category: 5- Star Hotel Development

Completion Date: 2013

Room Quantity: 346



Location: Karaköy, Istanbul

PORT BOSPHORUS HOTEL



Category: 4- Star Hotel Development
Completion Date: 2018
Room Quantity: 111





SÜTCAN DAILY FARMING FACILITIES



Category: Daily Farming Facility

Completion Date: 2011

Land Area: 400.000 sqm

Construction Area: 120.000 sqm

Cattle Capacity: 12.000

Daily Milk Production: 100.000 liters

Feeding Factory Capacity: 10 ton/hr

MILLENIUM PARK RESIDENCES



Category: *Luxury villa*
Completion Date: 2010
Villa Quantity: 199
Land Area: 242.000 sqm
Construction Area: 60.000 sqm



MILLENIUM PARK APARTMENTS



Category: Apartment construction

Completion Date: 2010

Flat Quantity: 72

Land Area: 30.000 sqm

Construction Area: 7.500 sqm



MILLENIUM PARK BAZAAR



Category: Shopping mall

Completion Date: 2010

Store Quantity: 72

Land Area: 12.600 sqm

Construction Area: 6.300 sqm



MIGROS MAIN DISTRIBUTION CENTER



Category: Warehouse construction

Completion Date: 1999

Construction Duration: 8 months

Land Area: 112.000 sqm

Construction Area: 56.000 sqm



KIĞILI STORES MAIN DISTRUBITION CENTER



Category: Warehouse construction

Completion Date: 2003

Construction Duration: 6 months

Land Area: 22.000 sqm

Construction Area: 11.000 sqm





Company Name: *As İnşaat. Turizm, Hayvancılık,
Sanayi ve Ticaret A.Ş.*

Address: *Çınar Mah. Tam Sk. No:17
Küçükyalı/ Maltepe/ ISTANBUL*

Web: *www.asinsaat.com*

e- mail: *info@asinsaat.com*

Tel: *+90 216 518 03 07*

Fax: *+90 216 518 03 19*



ASİNŞAAT
INDUSTRY & TRADE Co.